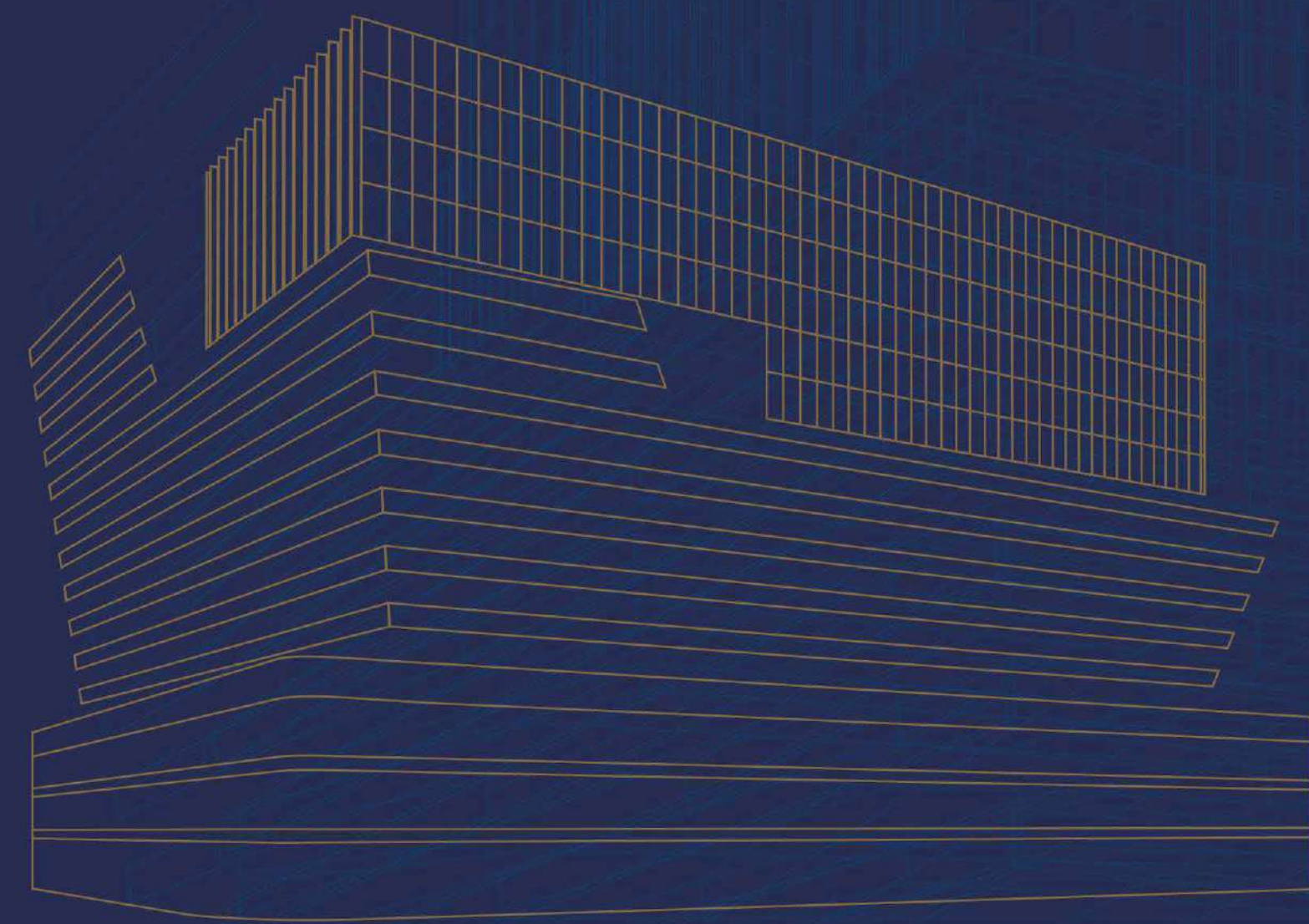




shivalik SHILP





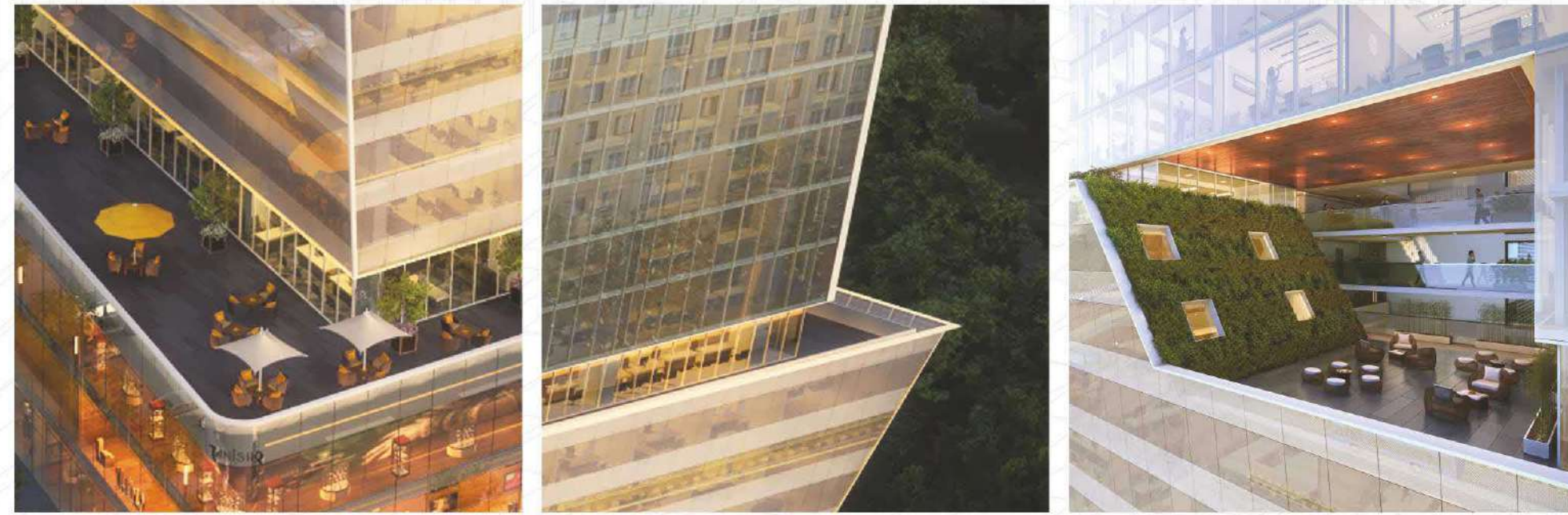
# YOUR GATEWAY TO BUSINESS EXCELLENCE

It's the ascension of progress and a modern junction for dynamic entrepreneurship. It is a place where possibilities become lucrative opportunities and business endeavors become thriving ventures. For some it will be an upgrade of their corporate persona, for others it will be a platform overlooking a plethora of prospects. But we consider it to be a Gateway, from where a new journey of your business will commence...

**Welcome to Shivalik Shilp – A World Class Business Centre Designed to Harness Opportunities**



# BASK IN THE EPITOME OF GRANDEUR



Shivalik Shilp represents opulence of engineering from every perspective. There is a dedicated leisure deck between floors, with both indoor and outdoor seating and provides comprehensive view of the magnificent city-scape. The structural design also deviates from conventional mould with angular outer construction, making Shivalik Shilp an iconic landmark of Ahmedabad's skyline.





ENJOY  
A 360° VIEW OF  
A PROGRESSIVE  
METROPOLIS  
shivalik SHILP

Outstanding construction of Shivalik Shilp breaks the traditional barriers and provides scenic walls that perimeter the entire structure. Pristine wall to wall frames give a breath taking view of the city life while giving ample natural ambient light that fosters the right entrepreneurial mindset.







## RELISH CONVENIENCE AT YOUR DOORSTEP



Interior View



Interior View

Shivalik Shilp is right in the middle of all the conveniences that the metropolis has to offer. It is also at the junction of the all major highways connecting you with the city and the rest of the world. Lined with subtle and elegant foliage, Shivalik Shilp offers a natural environment with ample seating areas and parking spaces away from any congestion or the streets.



# HUES OF NATURE TO NURTURE BUSINESS SPIRITS

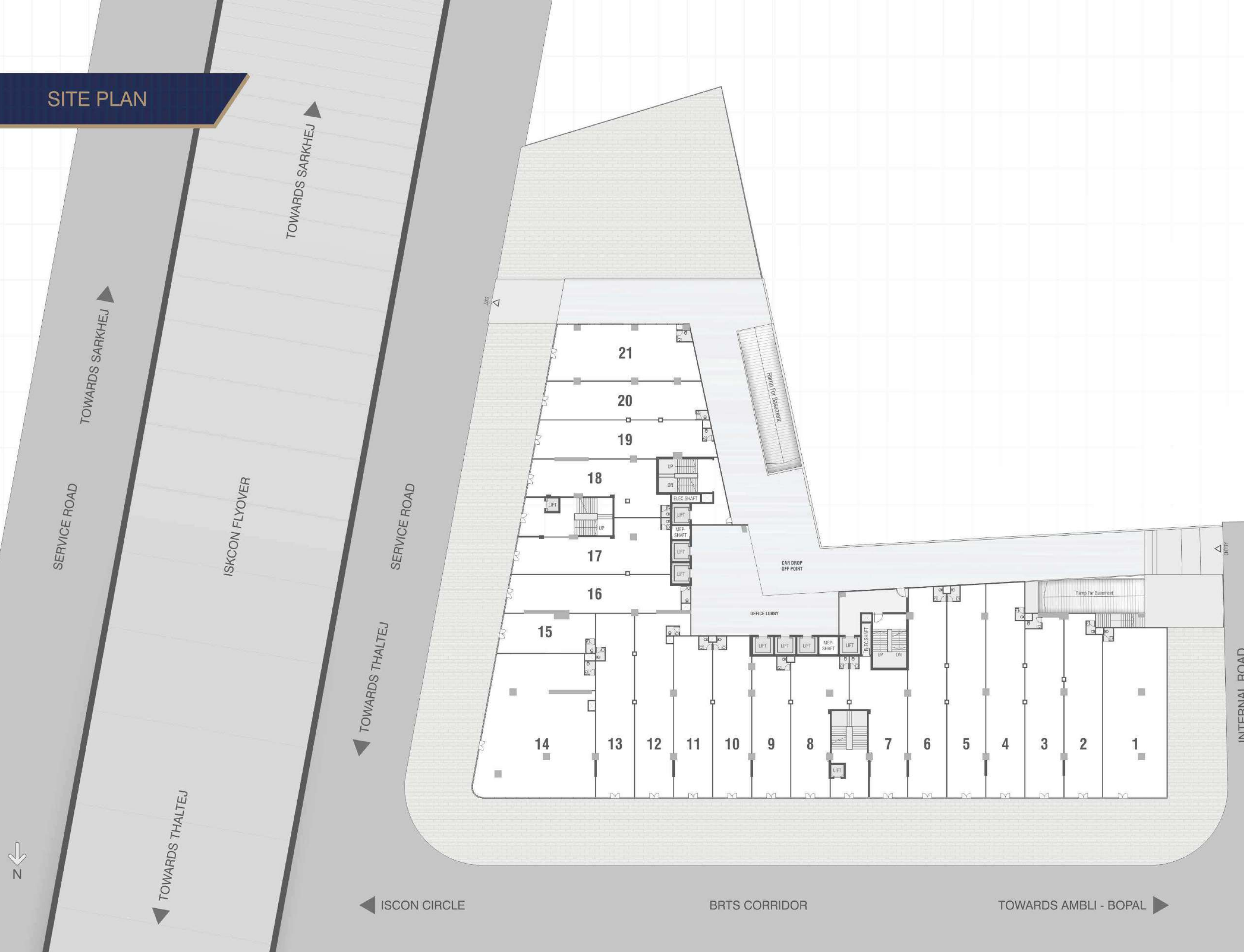


Shivalik Shilp's refined personality is embellished by a vast open garden space. It's the perfect opportunity to strike inspiring conversations or take a much needed break from your work space with a casual stroll in this lush premise.

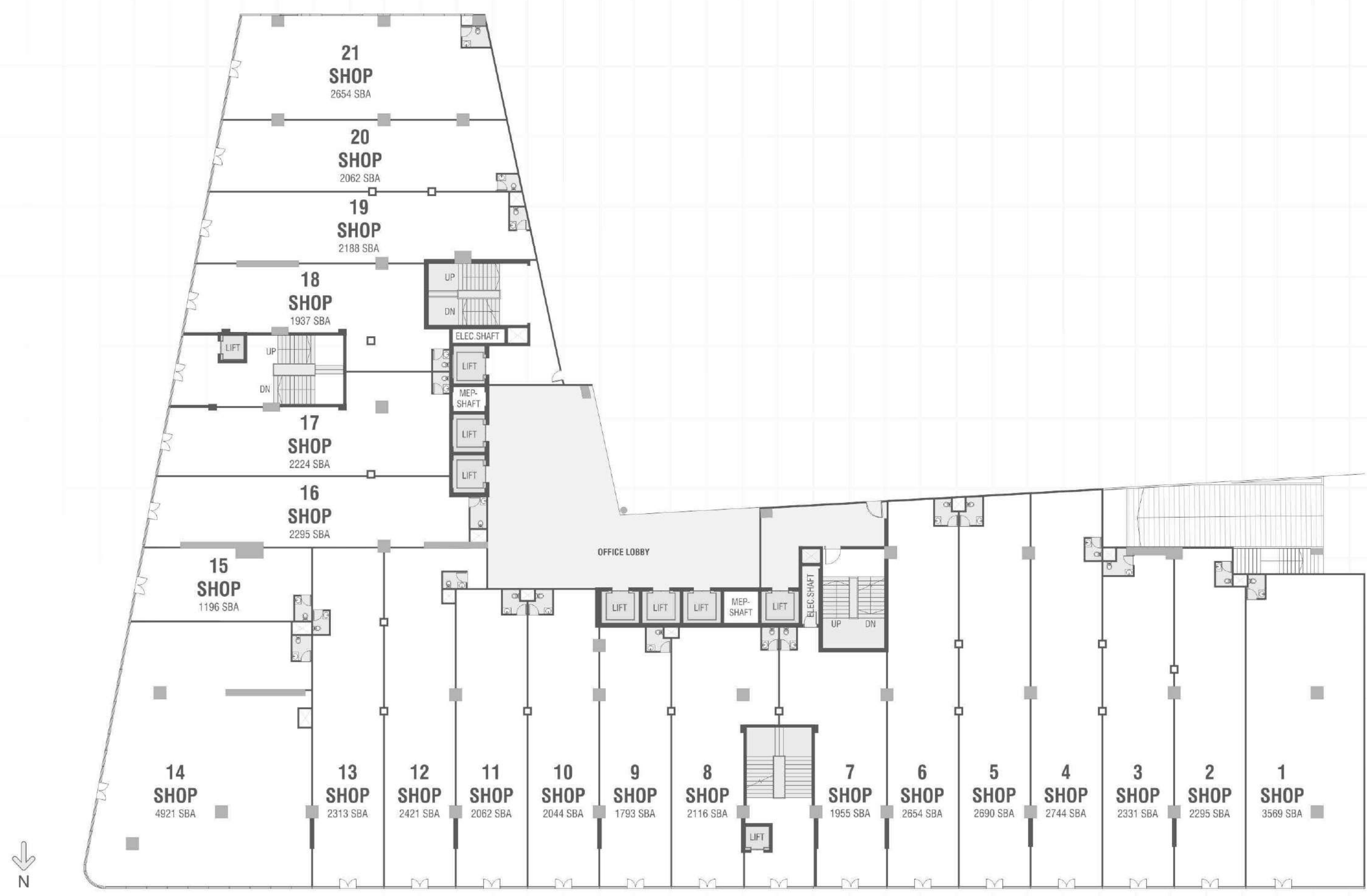




# SITE PLAN

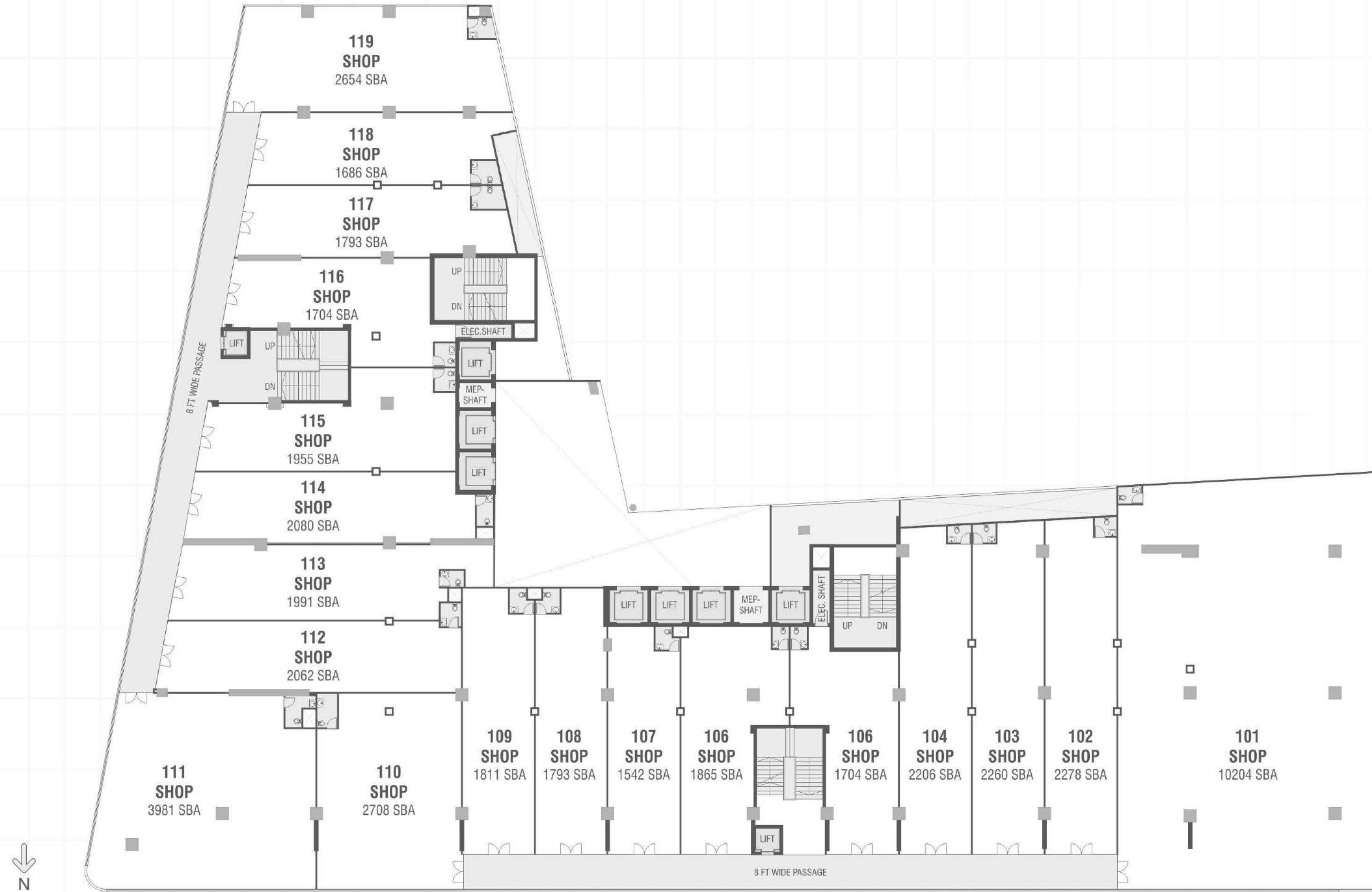


# GROUND FLOOR

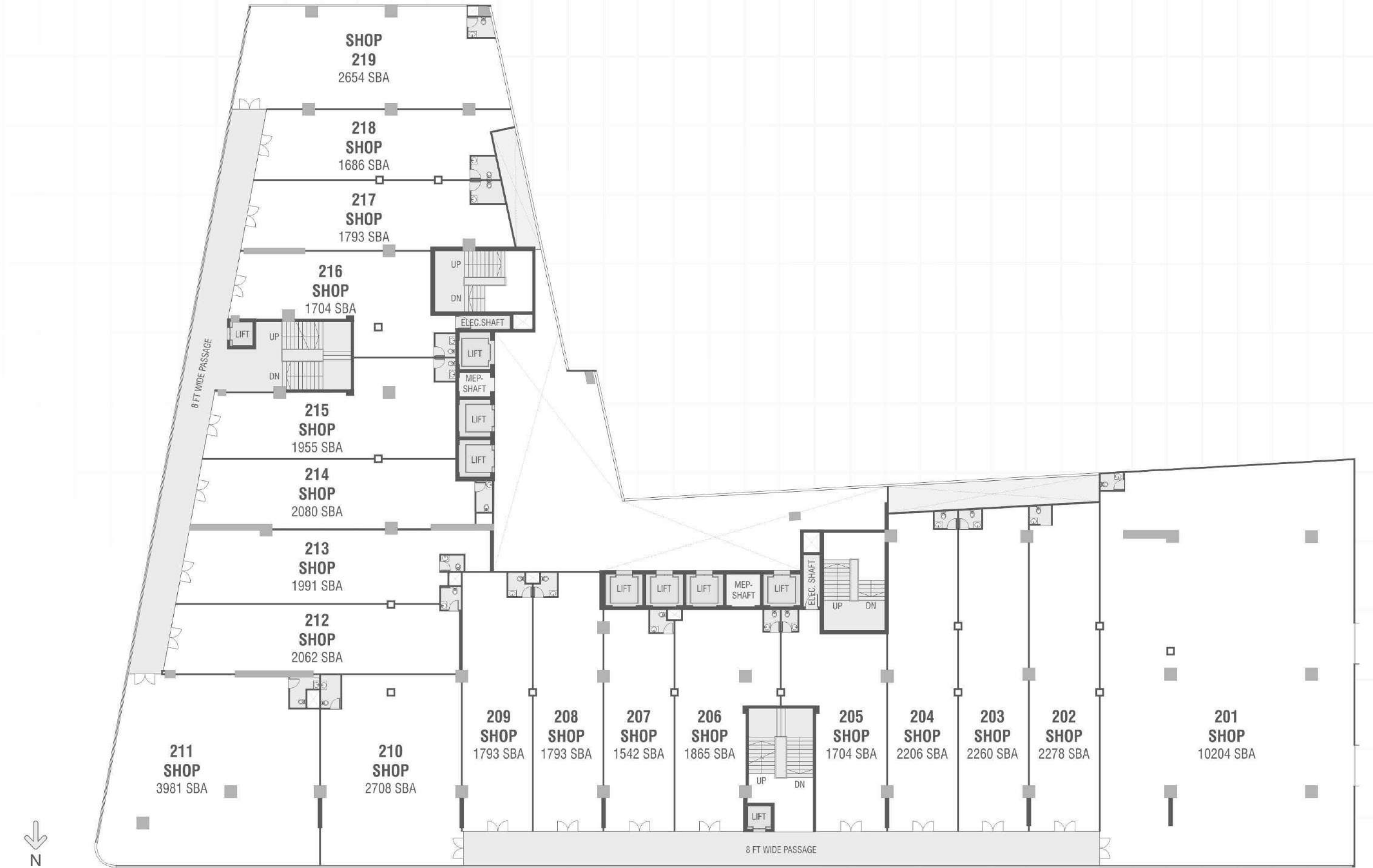




1st FLOOR



2nd FLOOR





3rd FLOOR



4th FLOOR

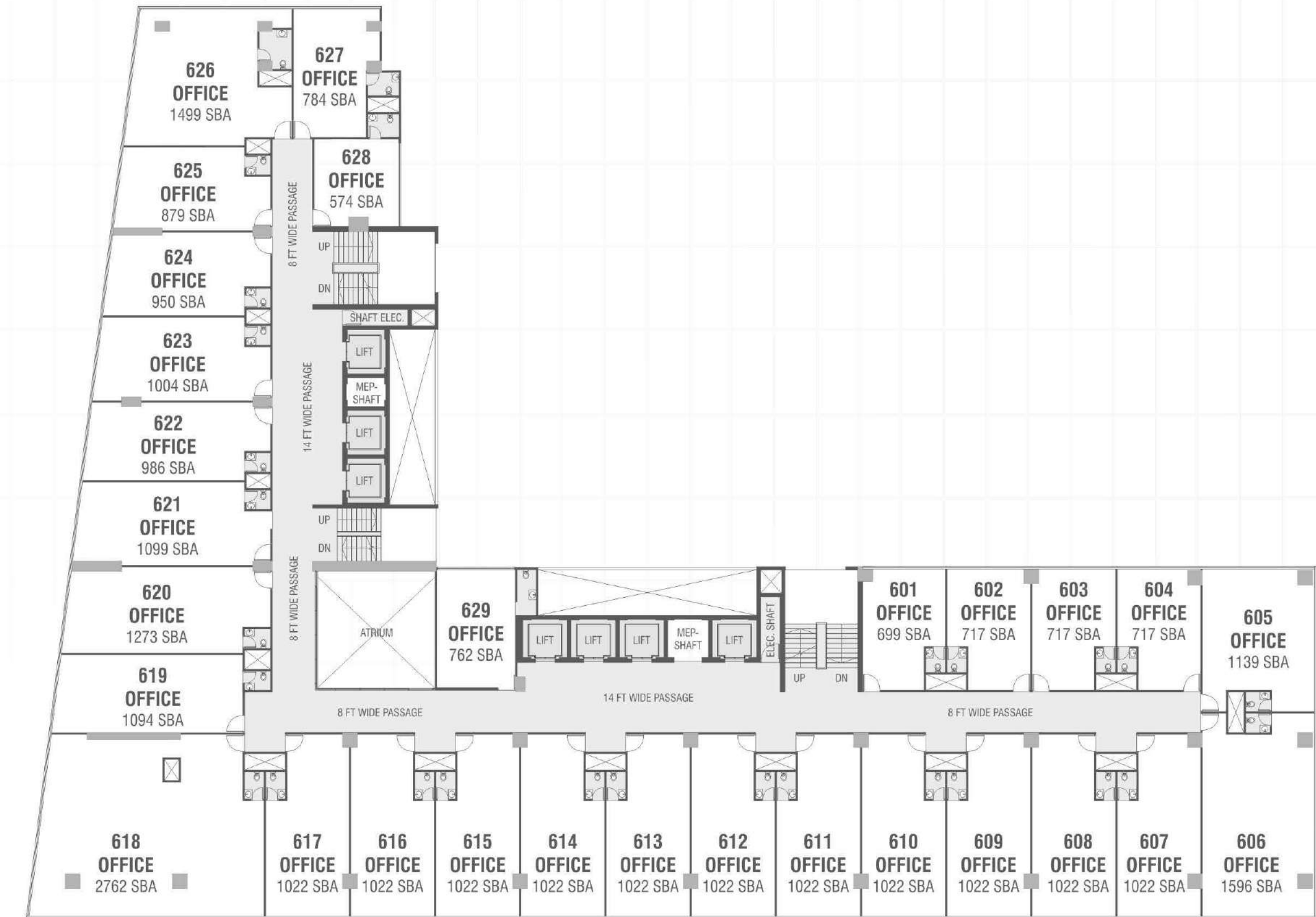




5th FLOOR

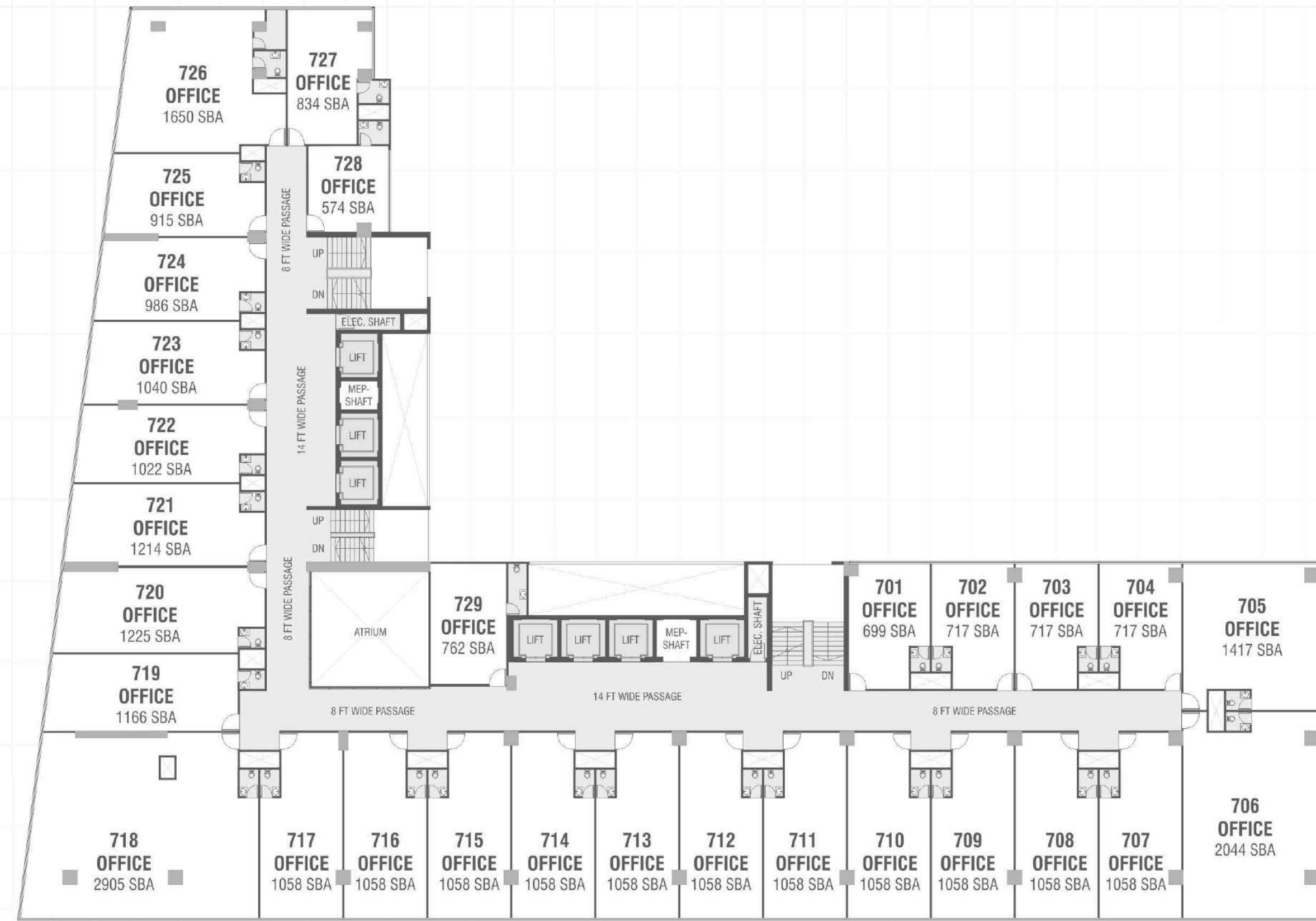


6th FLOOR

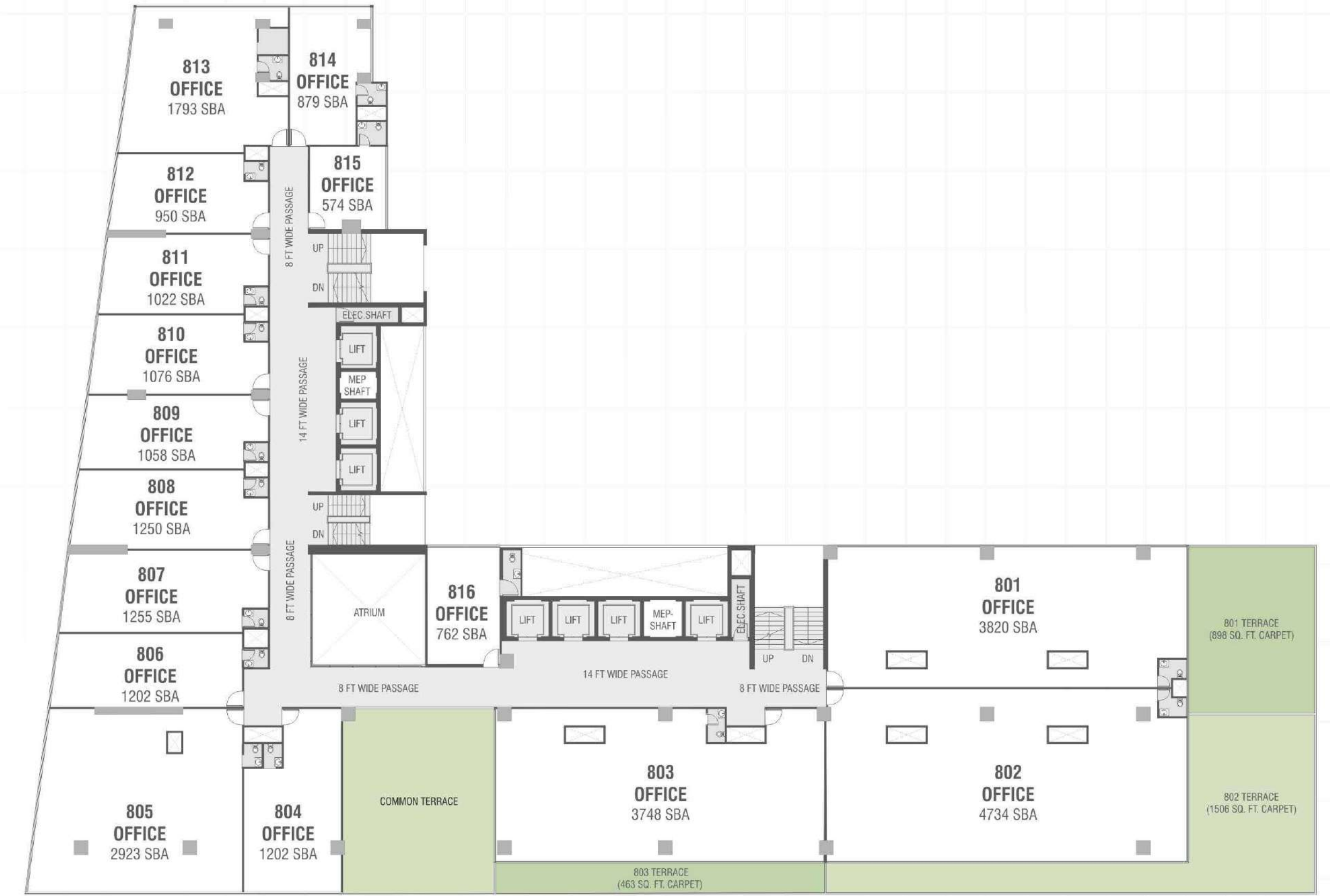




7th FLOOR



8th FLOOR

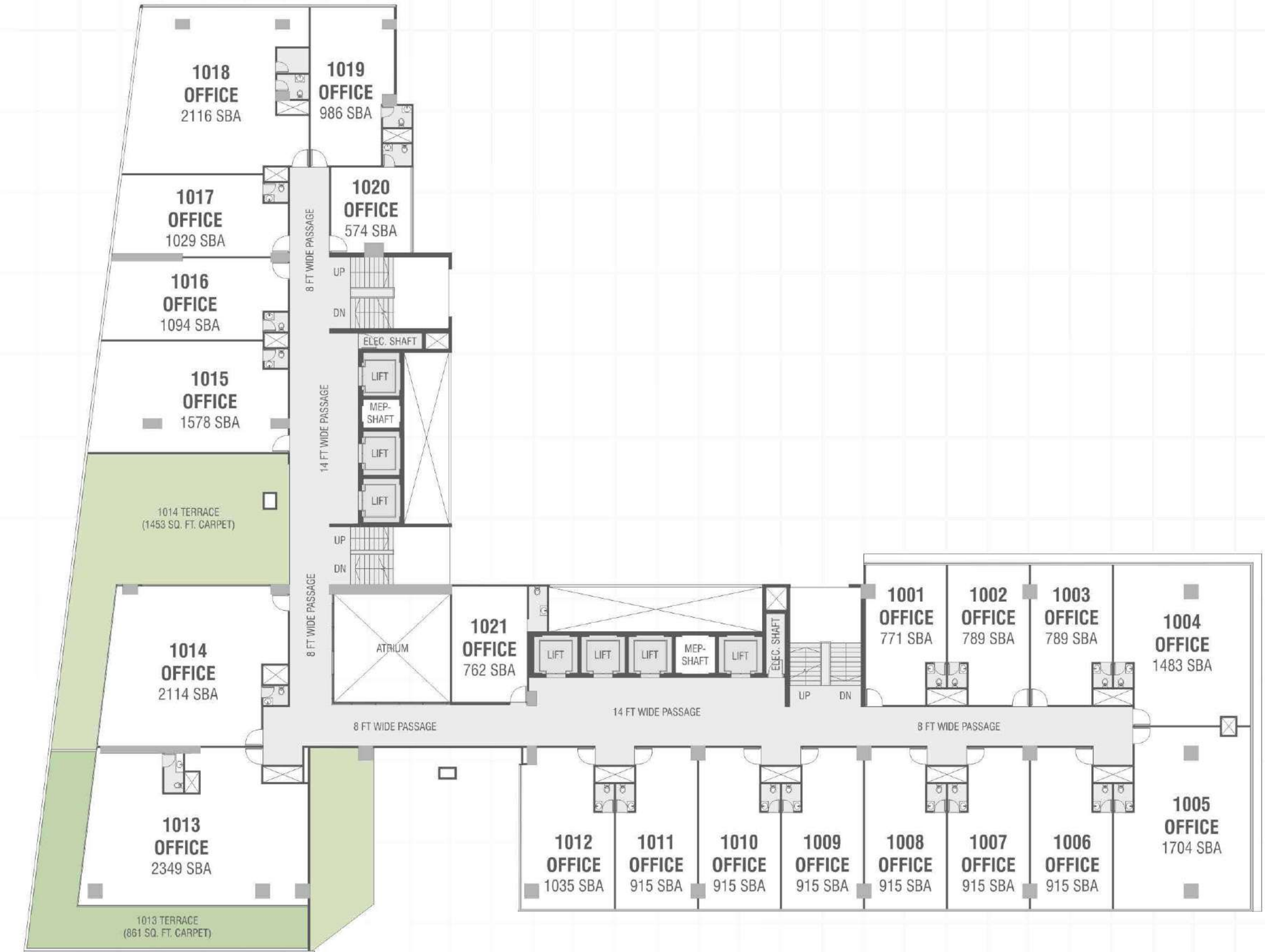




9th FLOOR

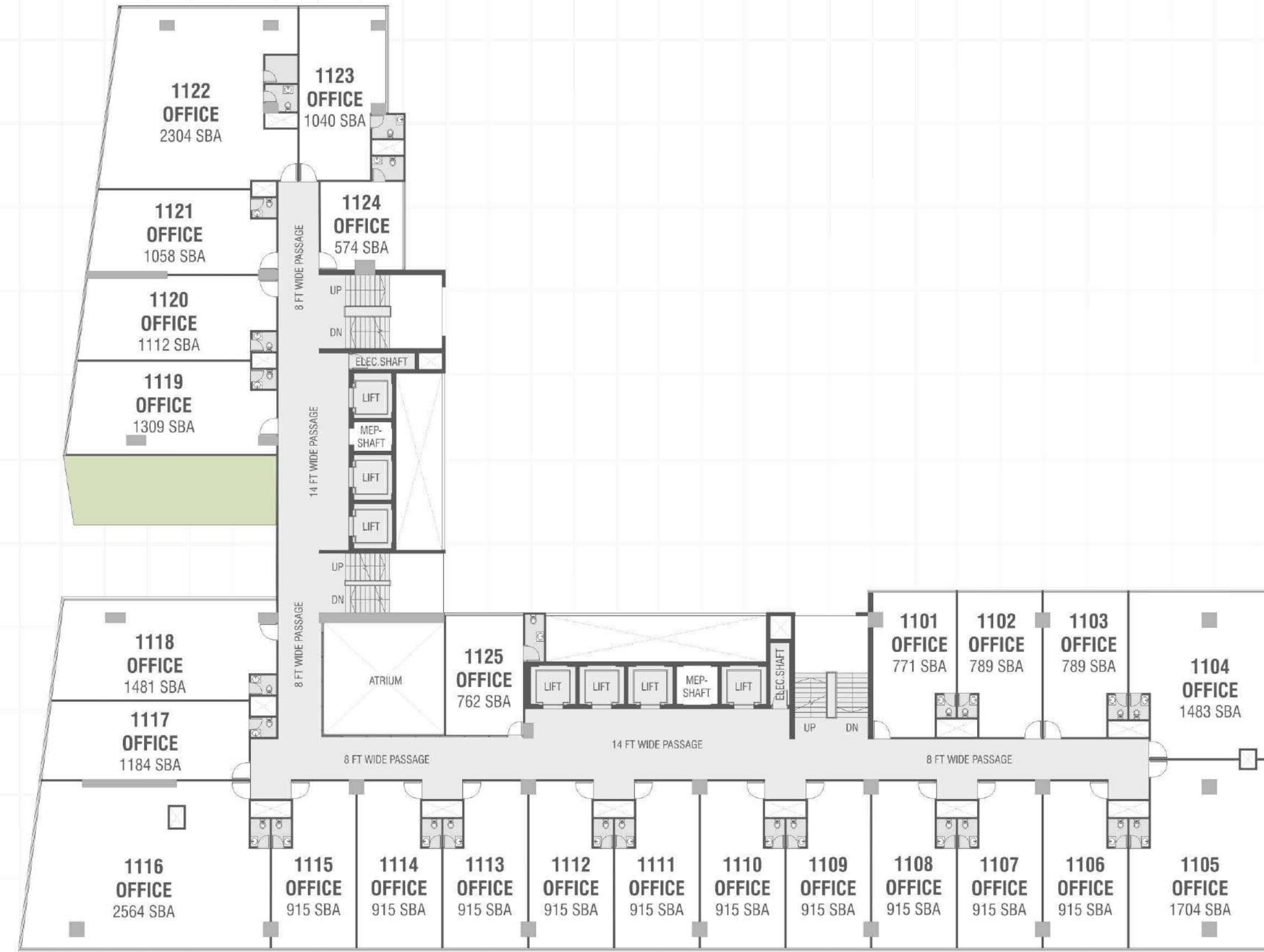


10th FLOOR

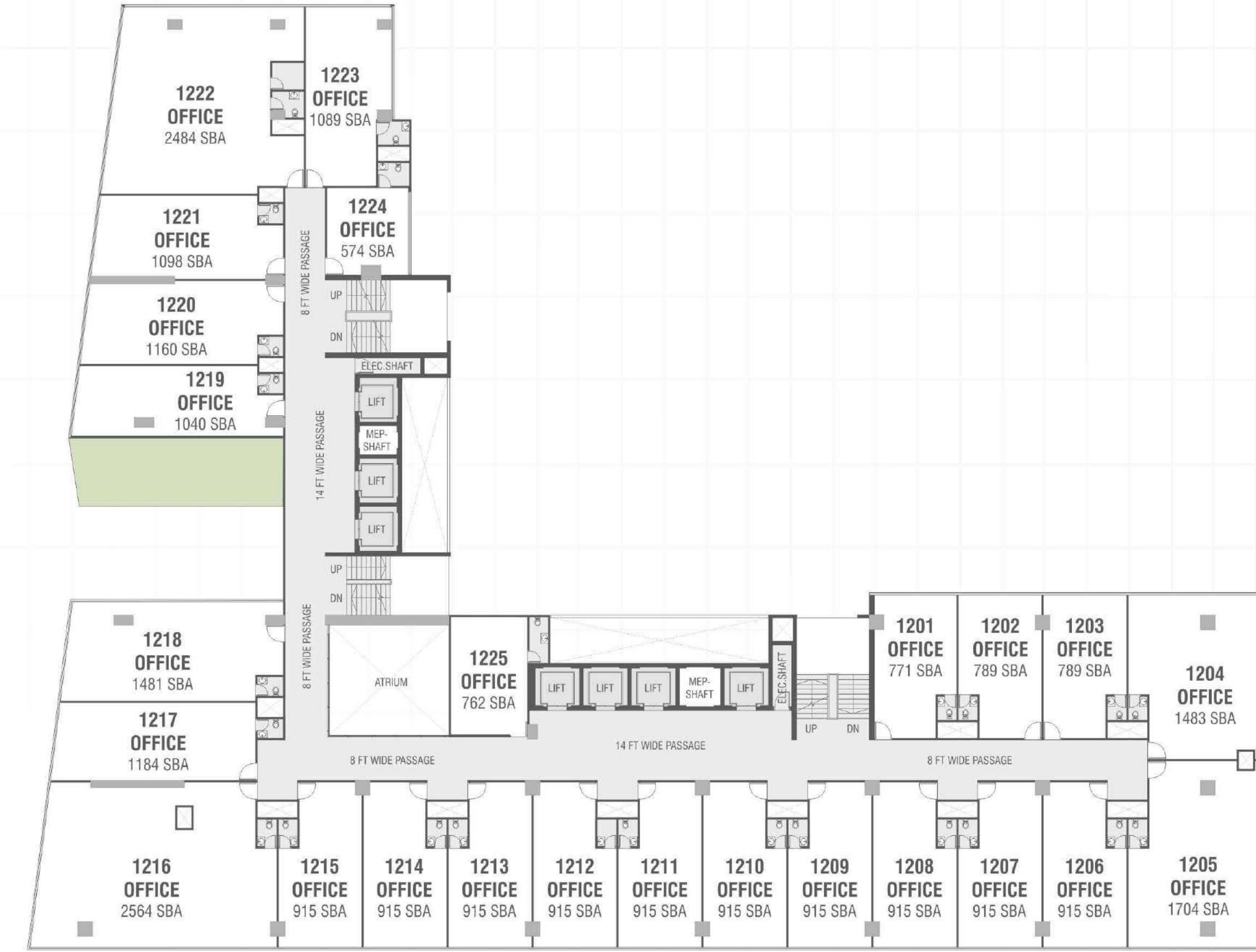




11th FLOOR

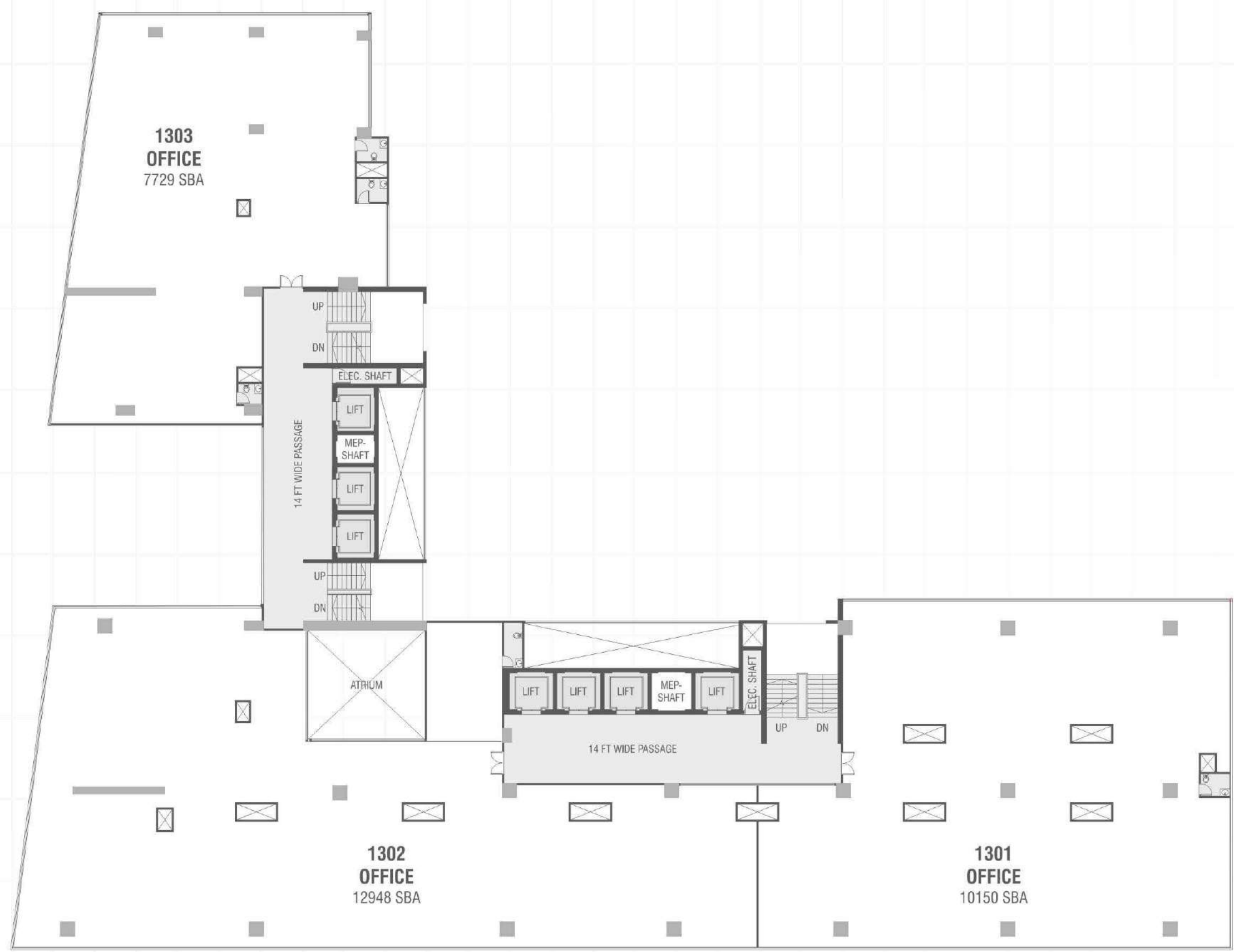


12th FLOOR





13th FLOOR





## GENERAL SPECIFICATIONS

### TILES FLOORING

STANDARD VITRIFIED

### ELECTRIFICATION

ADEQUATE ELECTRIC POINTS INCLUDING TELEPHONE POINTS

## AMENITIES

### DESIGNED BY

INTERNATIONAL ARCHITECTS - STANTEC

### SHOWROOMS / OFFICES

### MULTI LEVEL PARKING

### ALLURING

ATRIUM

### ENTICING

LOBBY

## SALIENT FEATURES

- ELEGANT APPEARANCE OF THE BUILDING
- WELL-PAVED MARGIN AREA
- 9 AUTOMATED ELEVATORS OF INTERNATIONAL COMPANY
- 24 HOURS WATER SUPPLY





## LOCATION MAP



### Terms:

Rights reserved by the developers to make any changes in plan, elevations and other details which will be binding to all the members • In order to maintain the aesthetics of the building at a very high level, installation of AC units will be permitted at the designated spots and nowhere else, changes which affect the elevation and structure system shall not be permitted for all times to come • Encroachment, in any form, outside the defined units shall not be allowed • Merchandise, articles, etc. cannot be stored / kept in common areas as defined by the project managers • Only internal changes shall be made with prior permission and shall be charged extra in advance • All dimensions shown in the plans are approximate, average, unfinished and subject to variations • Service tax and any other taxes will be extra • Change in services of individual units will not be permissible • Stamp duty and registration fees & service charges on allotment and possession of unit shall be borne by purchaser applicable as prevailing law • Any additional liabilities due to change in the by-laws, stamp duty, Govt. laws shall be borne by member • This brochure is meant only for information presentation & guidance purpose only it is not authorized or agreement. They do not form the basis of any contract • Variations may occur as per local regulation and our policy of improvement • **Any external signages for offices shall not be permitted for all times to come** • Payments are to be made in favour of "GSS Organisers LLP."



Best Realty Brands 2015  
by The Economic Times

shivalik®

### Shivalik Projects

B/s. Satellite Police Station, Satellite  
Ahmedabad 380 015, INDIA.

Call: +91 79 4020 0000 [www.shivalikprojects.com](http://www.shivalikprojects.com)



### Shilp Group

204, Shilp-3, Opp HOF Showroom,  
Mann Party Plot Cross Road, Sindhubhavan Road,  
S.G. Highway, Bodakdev, Ahmedabad 380 052, INDIA.  
Call: +91 7043001234 [www.shilp.co.in](http://www.shilp.co.in)



Architect  
Stantec  
Ahmedabad  
INDIA.



