

The unbound world around us is meant to be seen, experienced and appreciated. In the process, nothing can obstruct you. The boundless belts of this earth are more than mere surroundings.

**The world is all-inclusive.
The world, is**

360°
HANG OUT WITH THE CLOUDS

Anjney FineBuild

Since 1985
MARUTI
INSPIRING REALTY

☎ 99099-23456

🌐 www.marutibuildcon.com

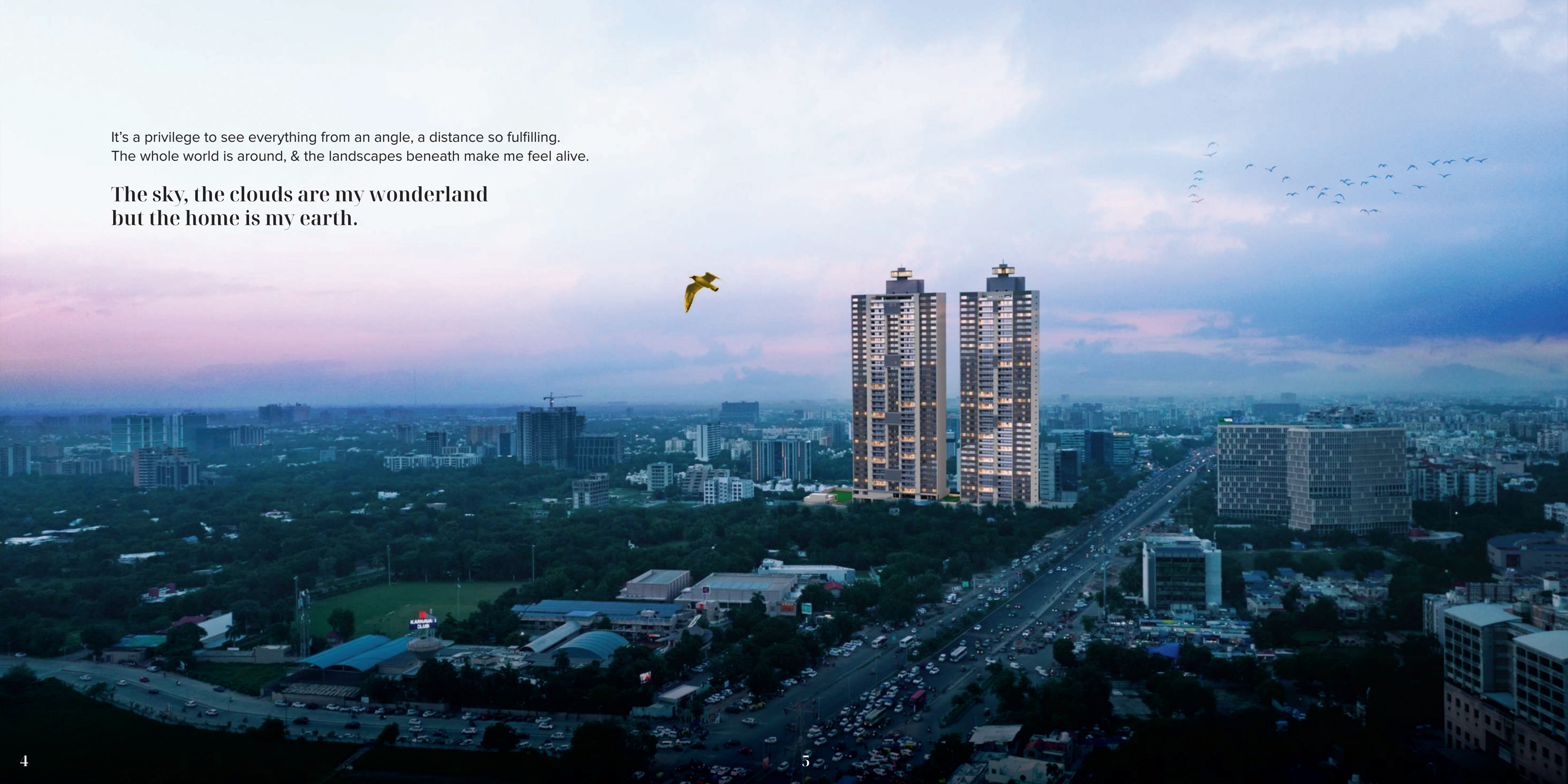
📍 Maruti 360°, Opposite NOVOTEL Hotel, Near Karnavati Club, S.G Highway, Ahmedabad 380054.


I'm living in my roost, the consummate place to dwell.
There's comfort, there's togetherness, there's intangible peace.
But I seek more. My flight craves the sky.



It's a privilege to see everything from an angle, a distance so fulfilling.
The whole world is around, & the landscapes beneath make me feel alive.

**The sky, the clouds are my wonderland
but the home is my earth.**





It feels like I have touched the silver lining on the cloud above.
The soar has been worth it. The feeling of my feathers brushing against
the soft touch of the clouds has shown me what ecstasy feels like.

It's time to live the experience permanently.



It's the burning question in my core.

**Do I have to split with the family,
the nestlings?**

But the sweet answer is, No.

For, the sky is big enough to embrace us all.

The measure is just a formality like being in temporary solace before moving into the wide landscape of contentment and realising.

In the end, it's about a permanent address I'll always belong to.
It's the reality of hanging out with the clouds, made easy, seamless
and soul-sufficing.

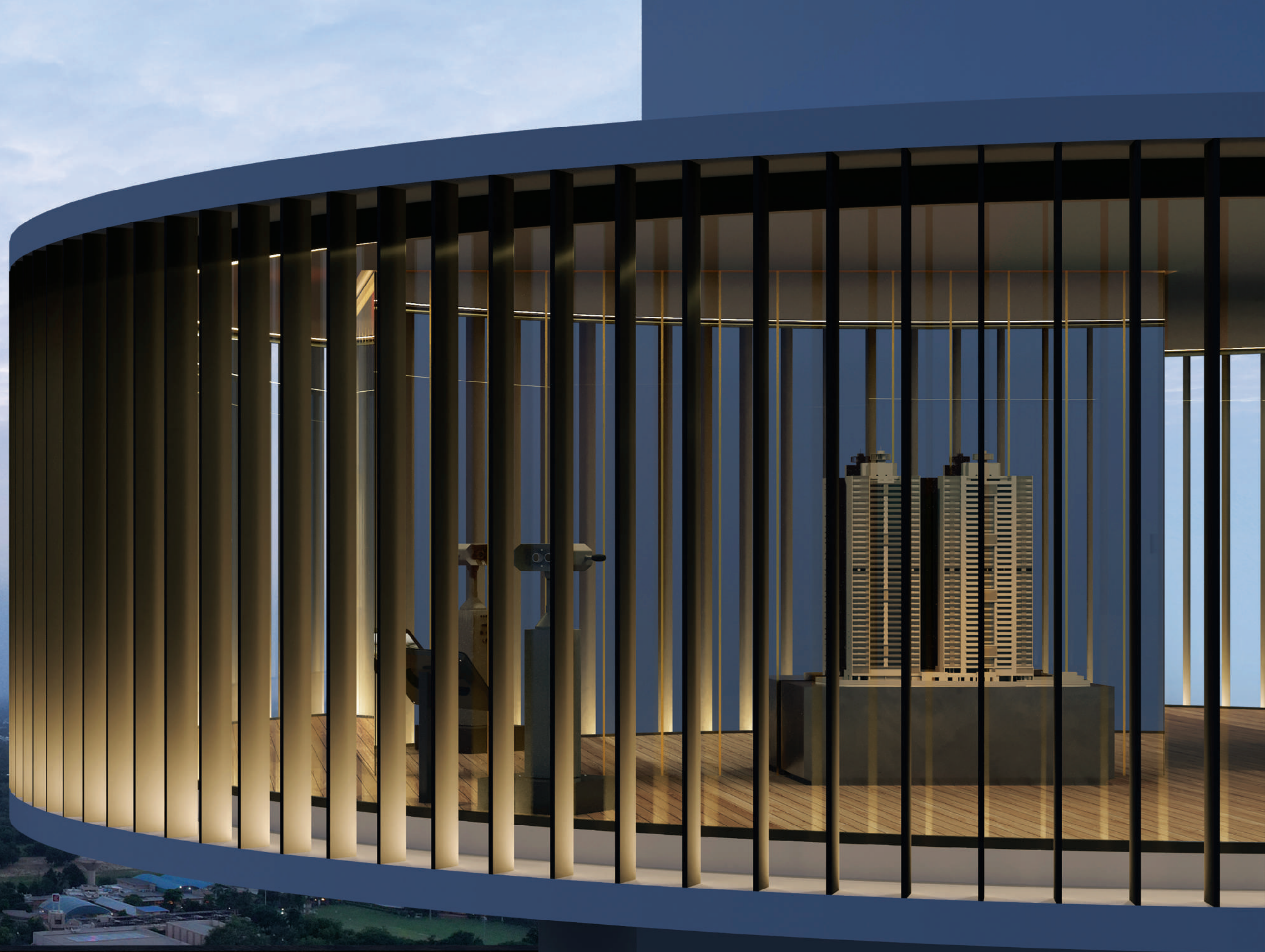
**With Maruti Group,
no flight and float are ever difficult.**



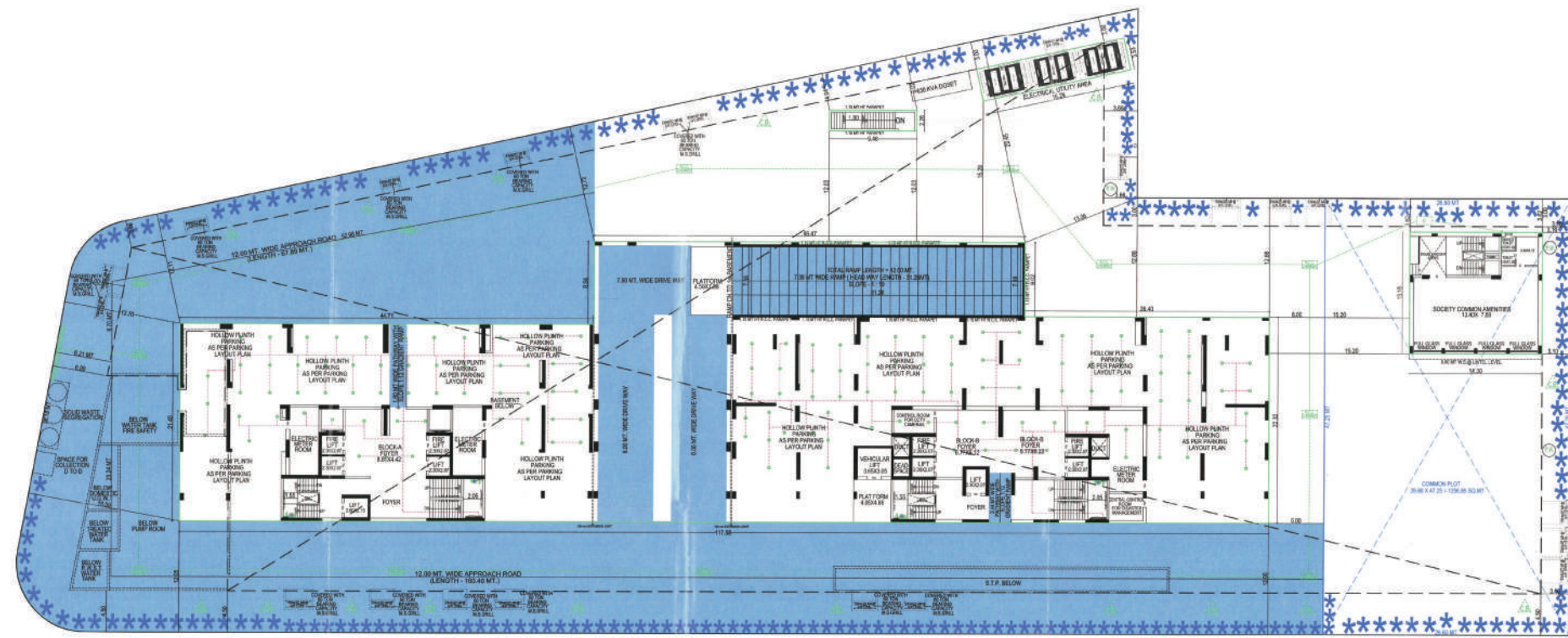
It might take a second to soar up.
But feeling contentment is the ultimate luxury that
we all must experience at least once. It's an extraordinary
need that you never knew you needed.

It's about living more than existing in the herd.
It's about a world of your own.
It's all about you, your destination, your 360°

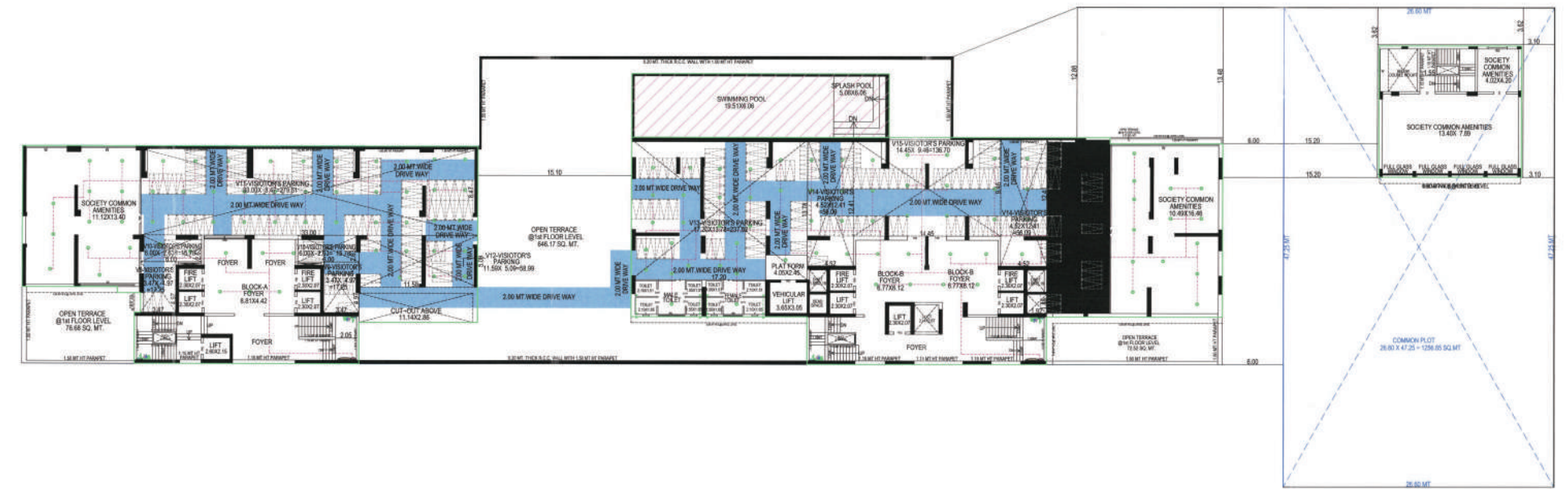
Come, Hangout with the clouds



Ground Floor Plan

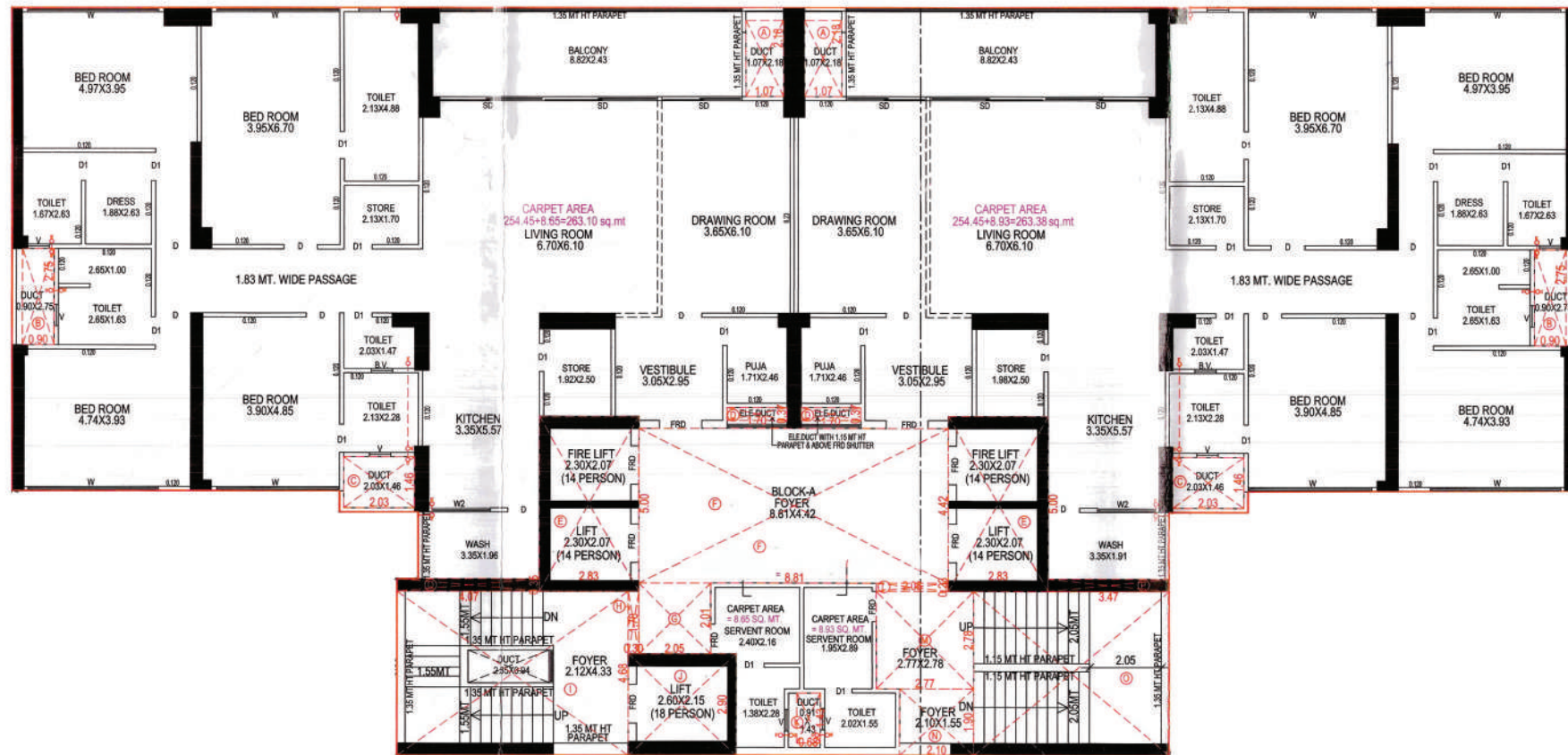


First Floor Plan



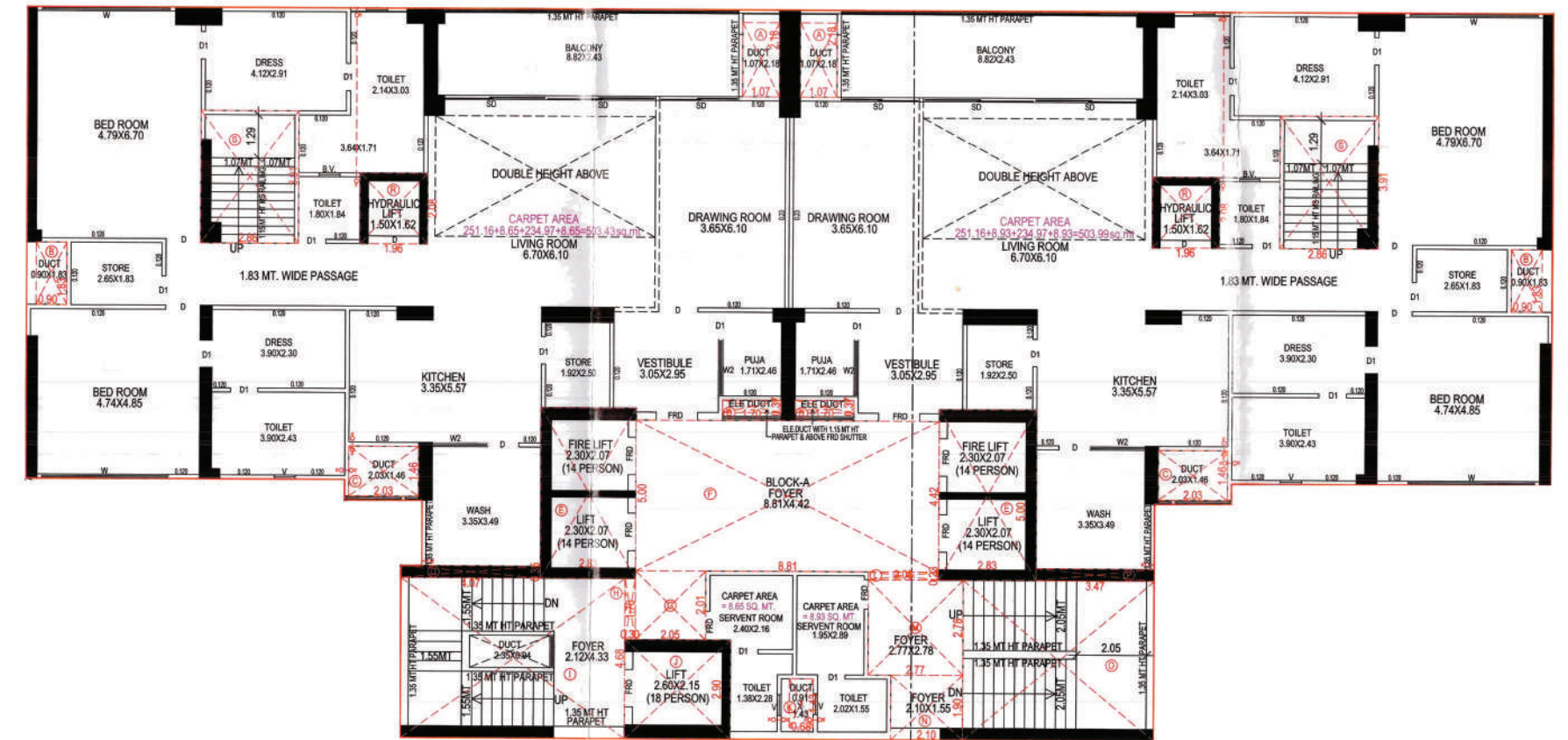
Block A - 4 BHK Typical Floor Plan

Carpet Area 254.45 + Serv Area 8.65 + Wash Area 6.40 + Balcony 21.43
(Sq.Mtrs)



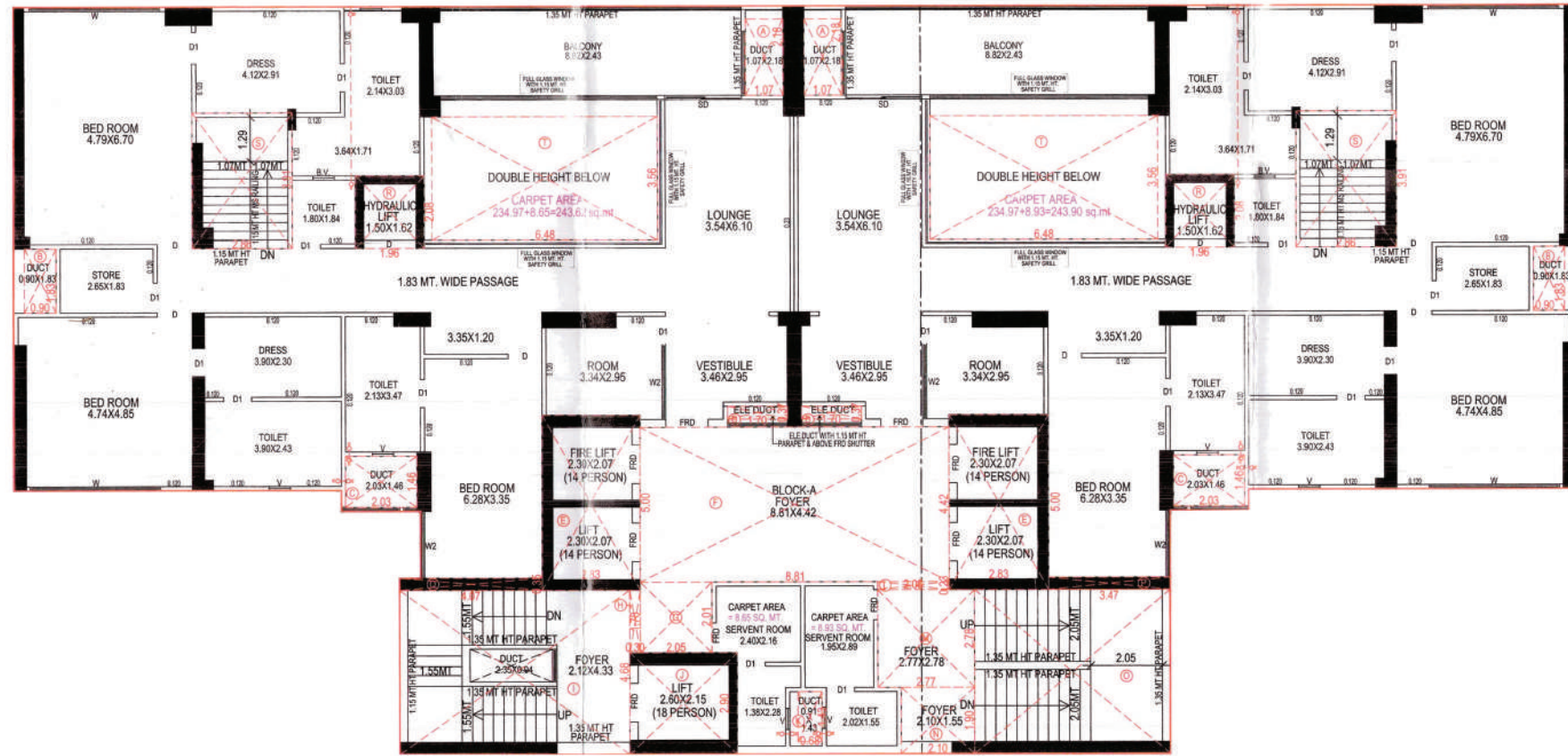
Block A - 4 BHK 32nd floor

Carpet Area 251.16 + Serv Area 8.93 + Wash Area 11.69 + Balcony 21.43
(Sq.Mtrs)



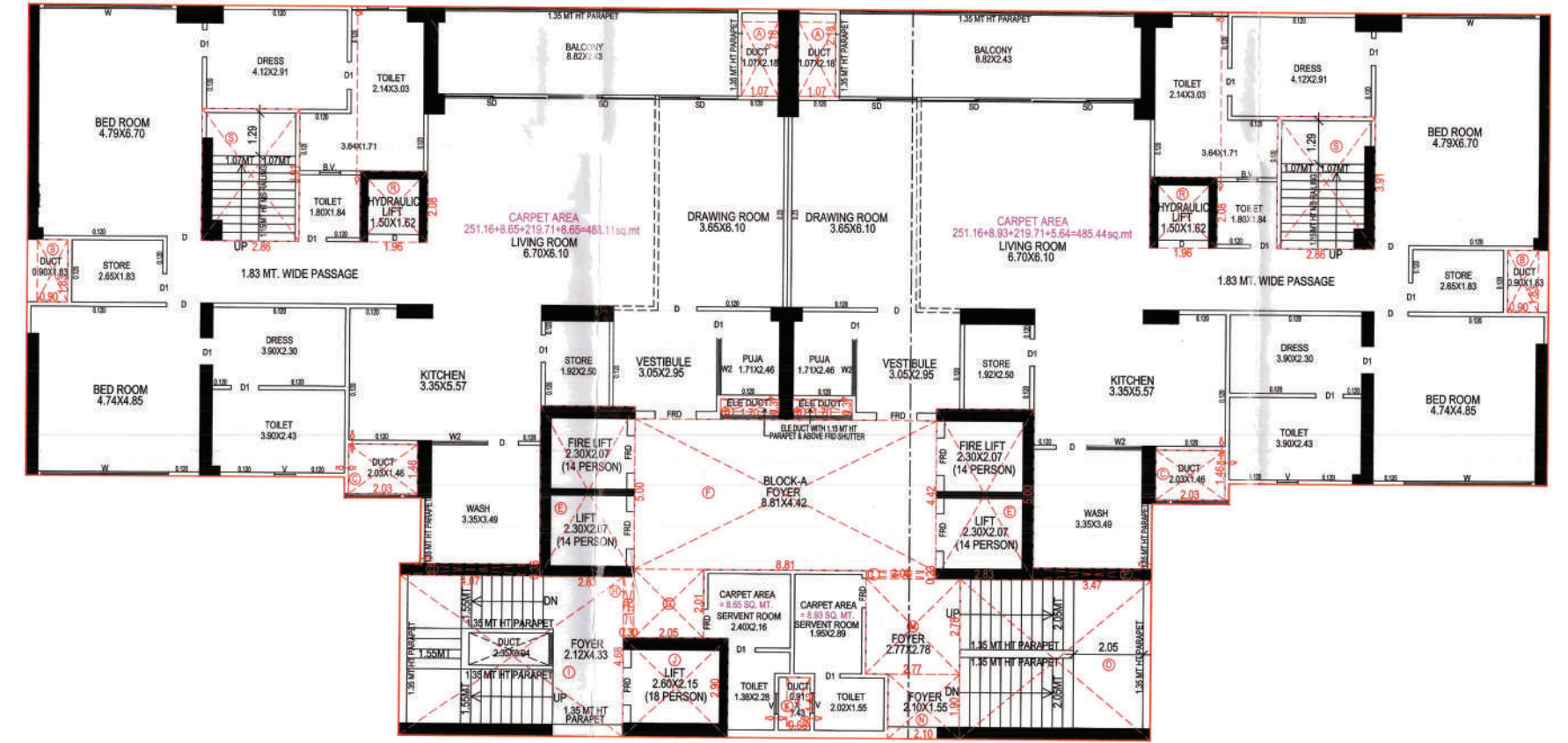
Block A - 4 BHK 33rd Floor

Carpet Area 234.97 + Serv Area 8.93 + Balcony 21.43
(Sq.Mtrs)



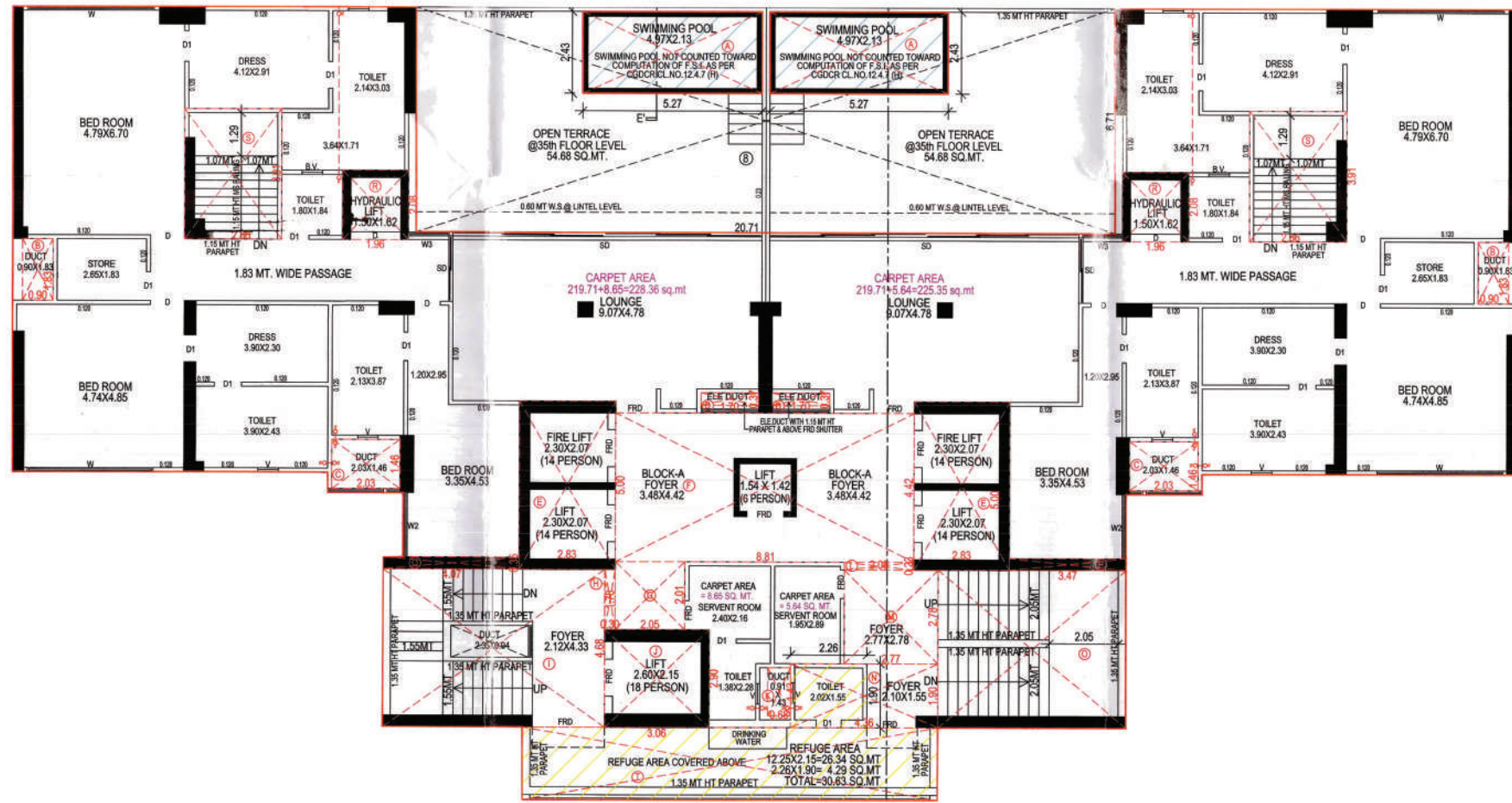
Block A - 4 BHK 34th floor

Carpet Area 251.16 + Serv Area 8.93 + Wash Area 11.69 + Balcony 21.43
(Sq.Mtrs)



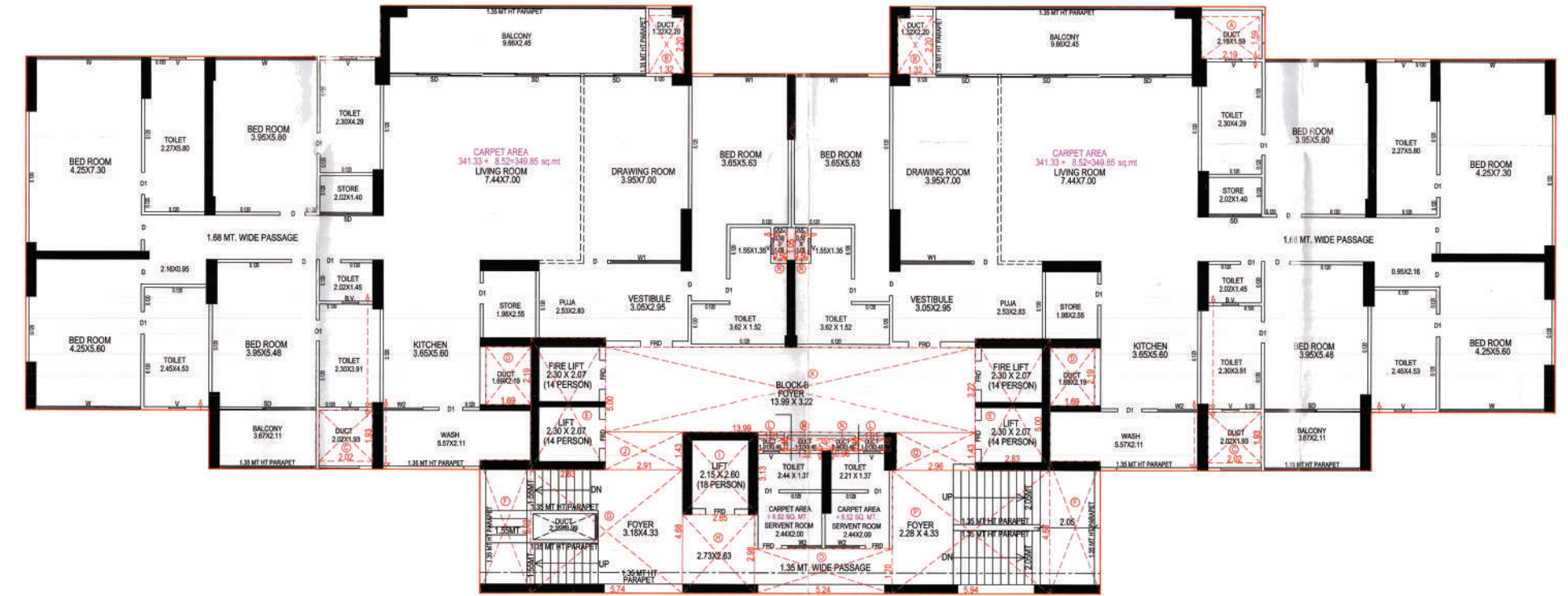
Block A - 4 BHK 35th floor

Carpet Area 219.71 + Serv Area 5.64 + Balcony 54.68 (Open Terrace)
(Sq.Mtrs)



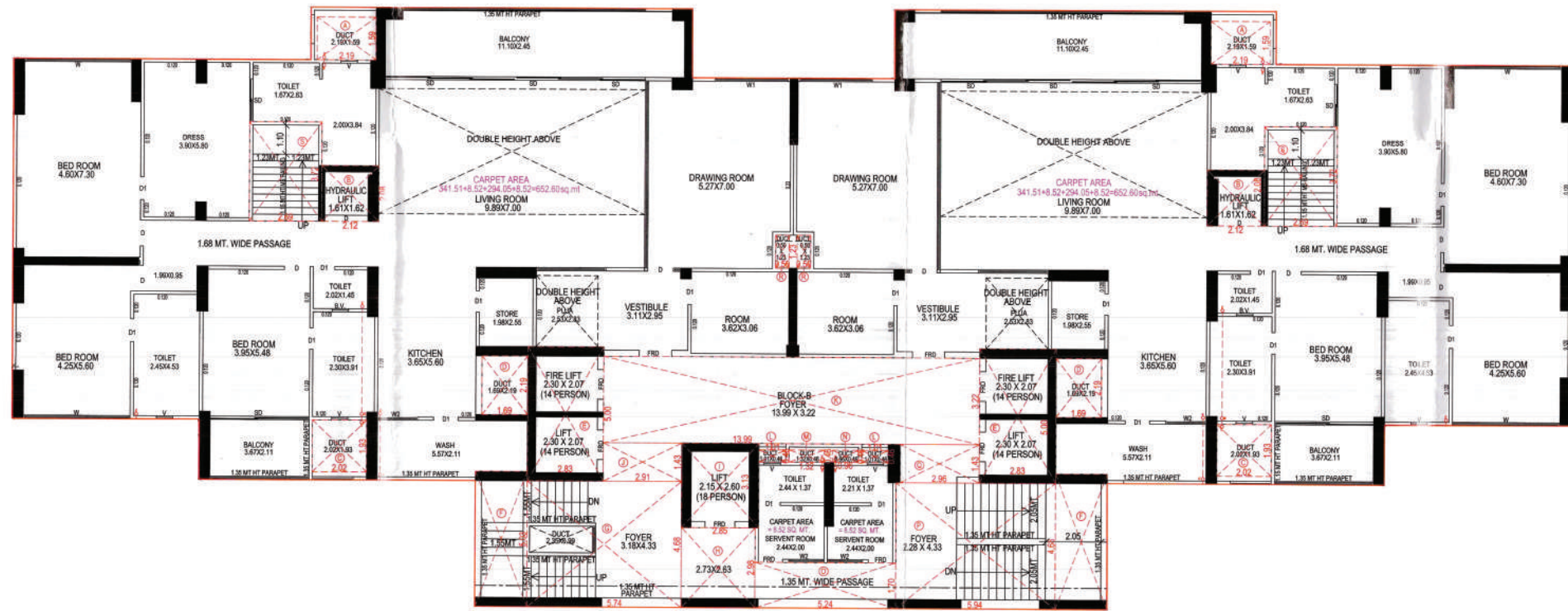
Block B - 5 BHK Typical Floor Plan

Carpet Area 341.33 + Serv Area 8.52 + Wash Area 11.31 + Balcony 31.41
(Sq.Mtrs)



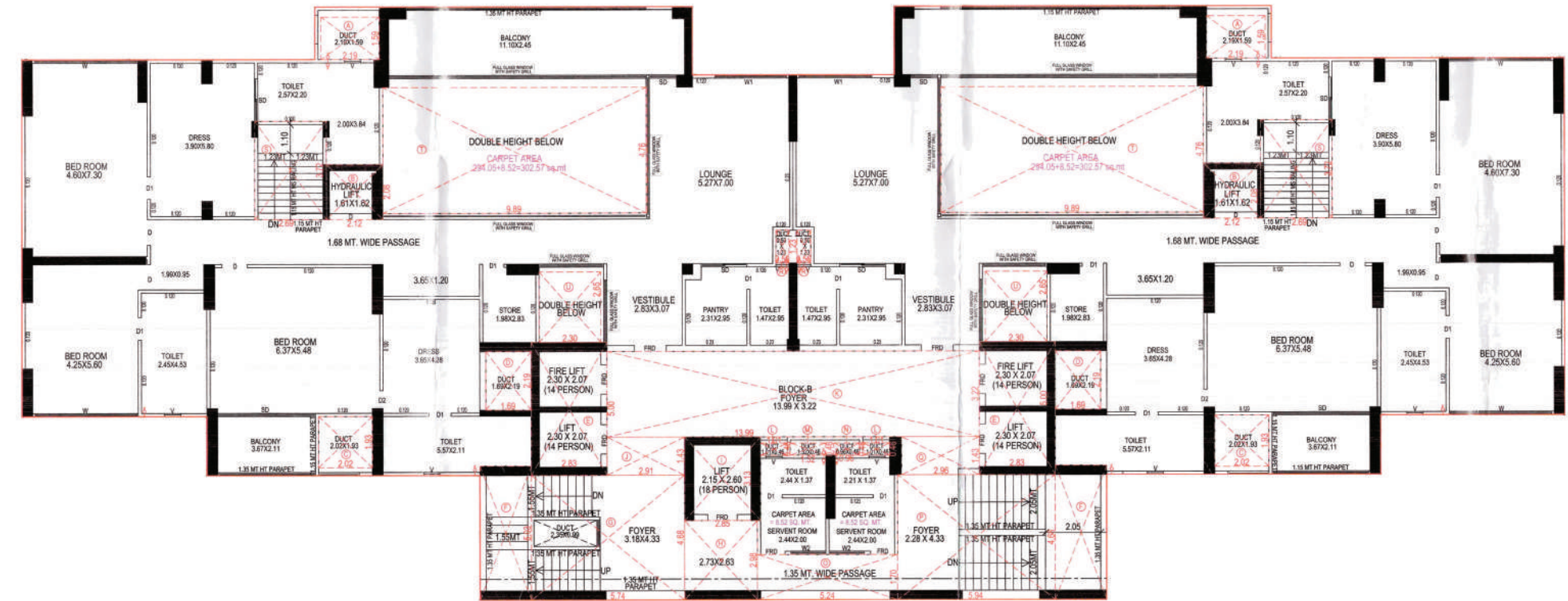
Block B - 5 BHK 32nd Floor

Carpet Area 341.51 + Serv Area 8.52 + Wash Area 11.31 + Balcony 34.94
(Sq.Mtrs)



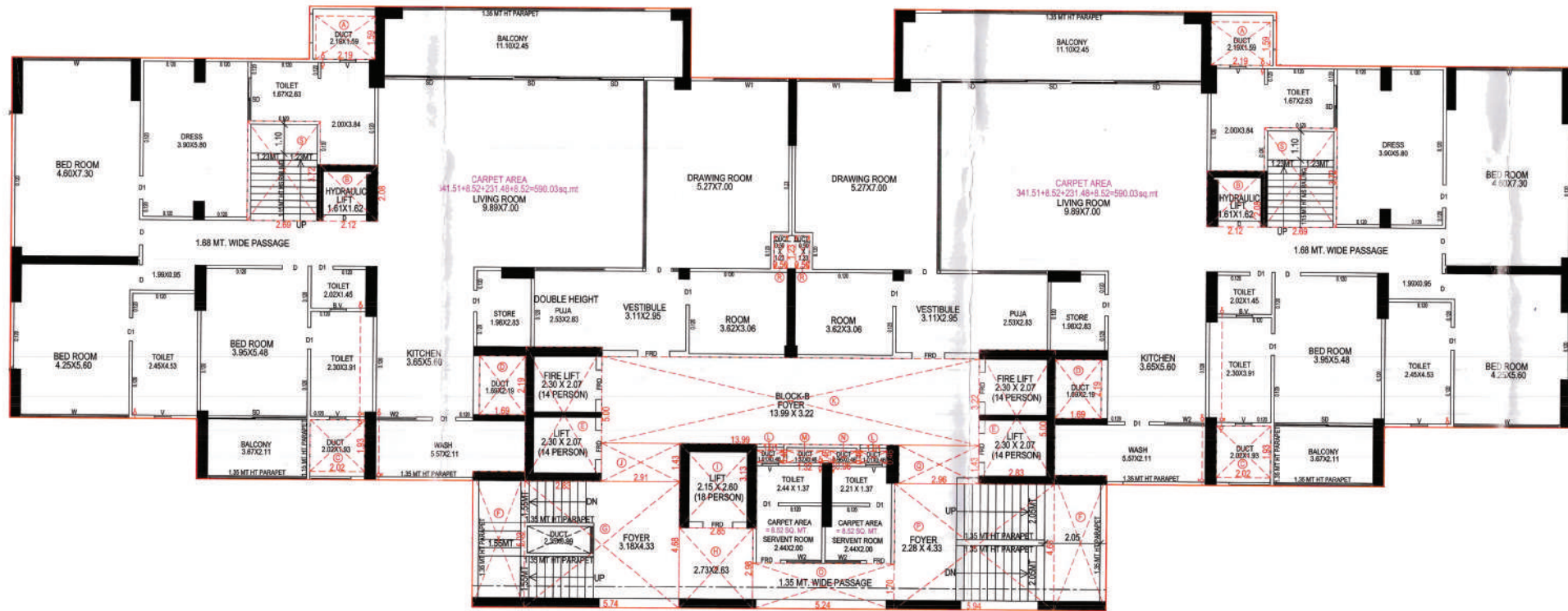
Block B - 5 BHK 33rd Floor

Carpet Area 294.05 + Serv Area 8.52 + Balcony 34.94
(Sq.Mtrs)



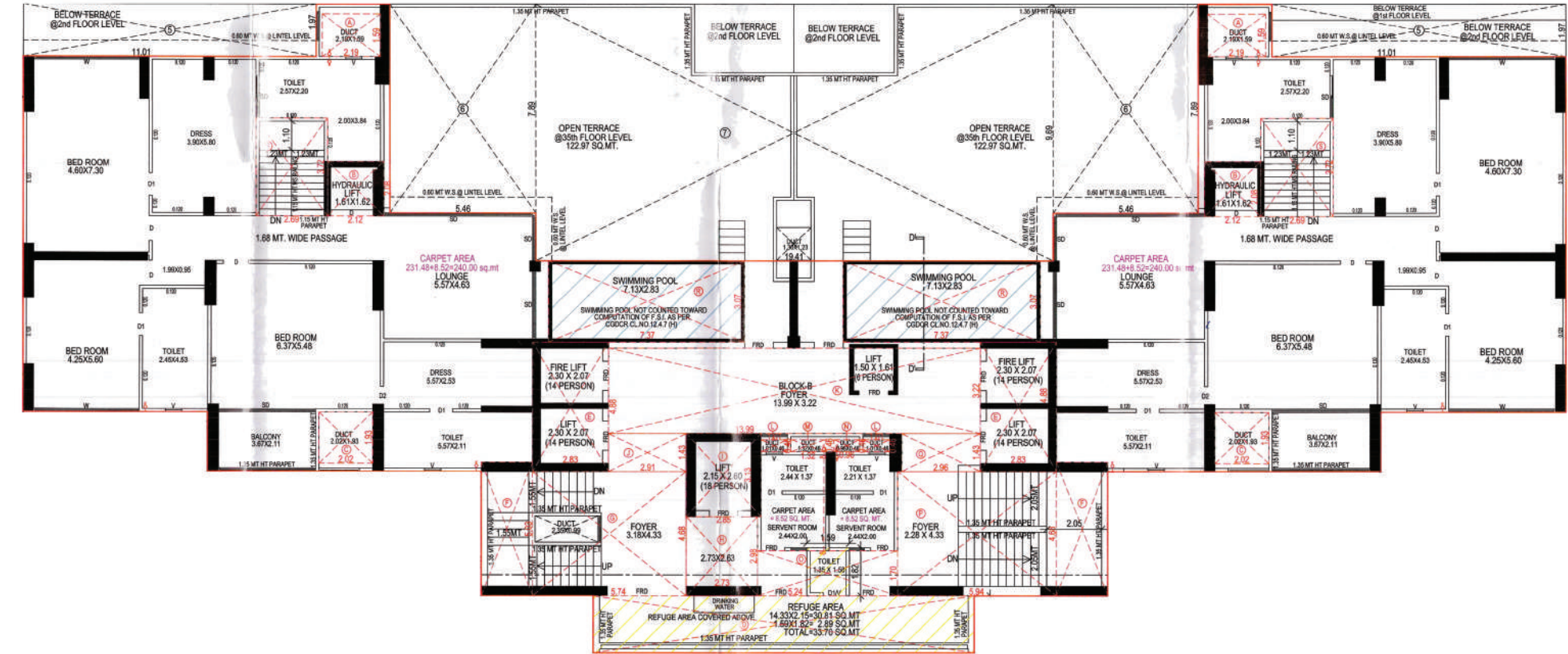
Block B - 5 BHK 34th Floor

Carpet Area 341.51 + Serv Area 8.52 + Wash Area 11.31 + Balcony 34.94
(Sq.Mtrs)

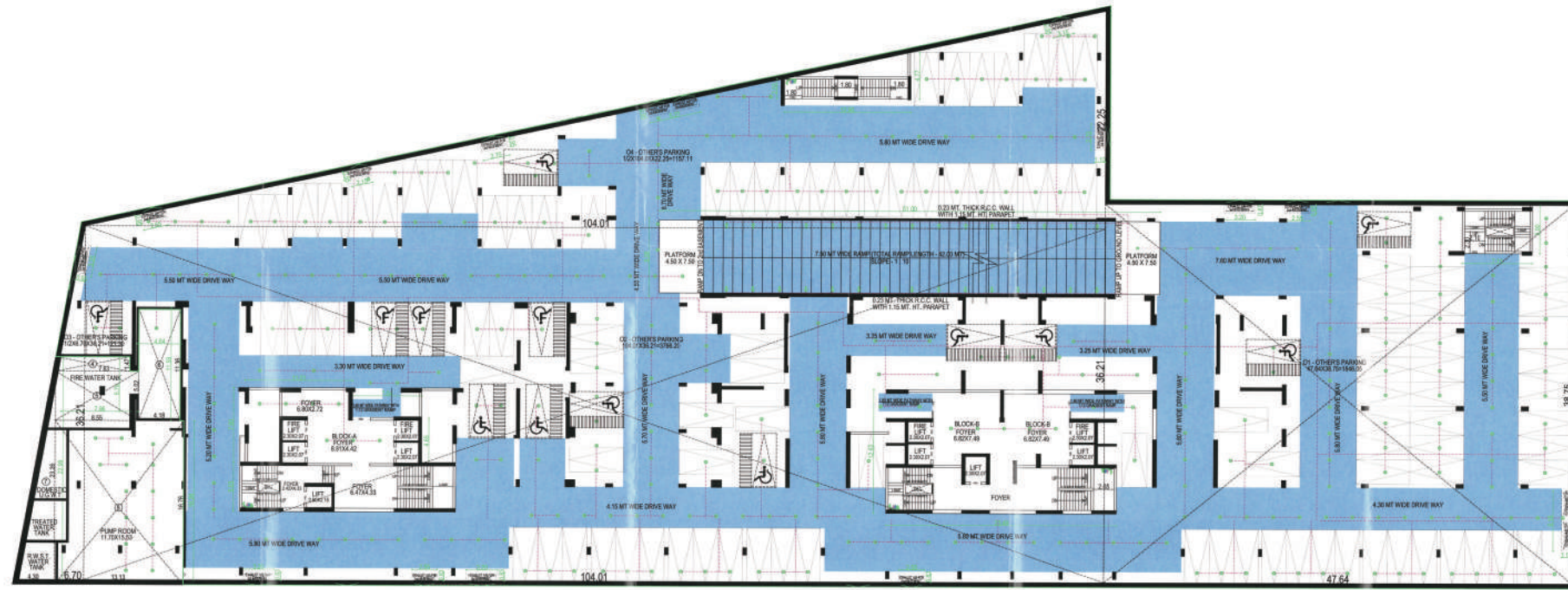


Block B - 5 BHK 35th floor

Carpet Area 231.48 + Serv Area 8.52 + Balcony 7.74 + 122.97 (OPEN TERRACE)
(Sq.Mtrs)



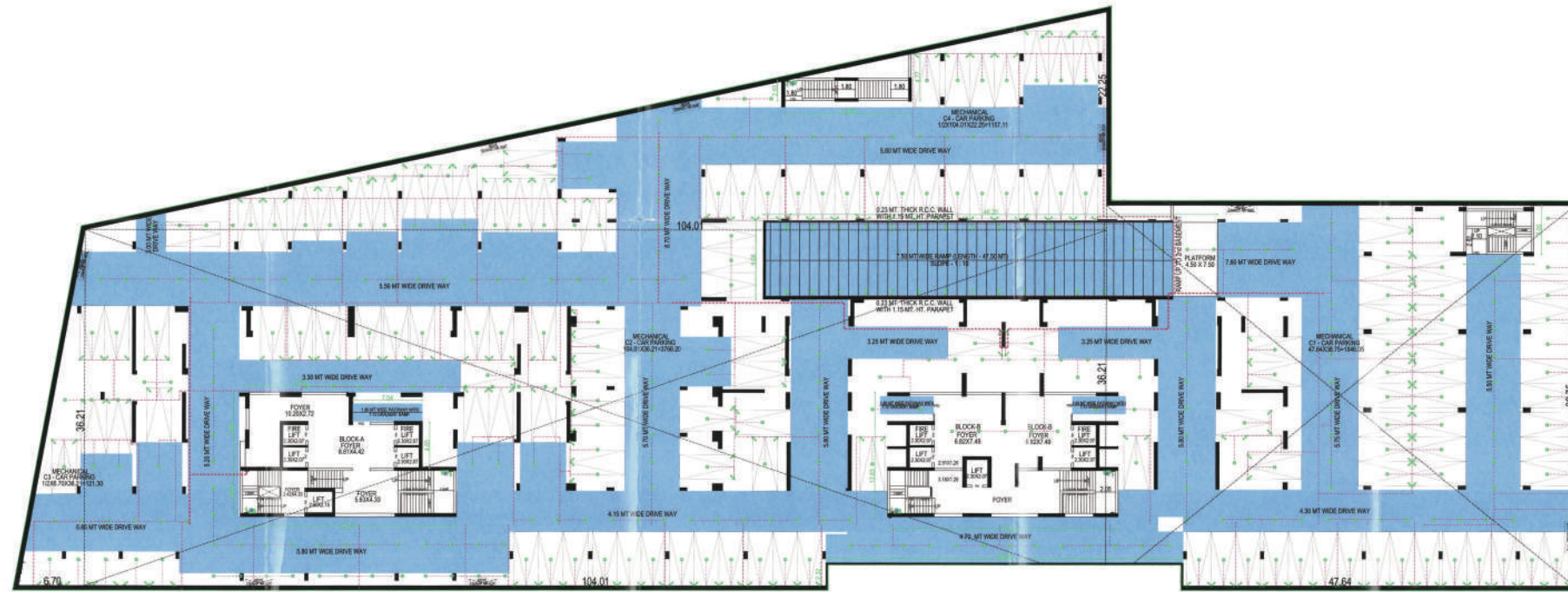
Basement-1



Basement-2



Basement-3



Specifications

Bedroom
Italian Marble Flooring

Bathroom
Branded Sanitary

Wall Finish
Smooth Gypsum
Finish Plaster

Doors
Entrance Door With
A Wooden Jamb

Windows
Powder Coated / Anodized
Aluminium High-Grade

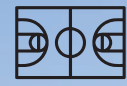
Electrical Fittings
Premium Branded ISI
Marked Fittings



Outdoor Amenities



Children's
Playing Zone



Multipurpose
Court



Club House
(Multi-Functional Hall)



Landscaped
Garden

Recreational Amenities



Gym



Yoga Zone



Indoor
Games



Swimming
Pool



Informal
Sit-Out Space

Extra Amenities

Rainwater Harvesting

STP

DG Backup For Common Lighting
(For Essential Amenities)

Solar Panels (As Per Govt Norms)





Location Map

